

Improvements to San Tin Interchange Environmental Monitoring and Audit - Noise Monitoring Results

Normal Daytime Hours

(0700 to 1900 hours on any day not being a Sunday or general holiday)

Monitoring Location	Date of Monitoring	Monitoring Period		Weather	Wind Speed, m/s	L _{eq(30min)} dB(A)	L ₁₀ dB(A)	L ₉₀ dB(A)	Major Noise Source(s)
		From	To						
CM1	2-May-07	9:13	9:43	Sunny	0	65	67	62	Traffic noise from San Tin Highway.
	8-May-07	9:16	9:46	Sunny	0	65	67	63	Crane operation in Slip Road A works area; traffic noise from San Tin Highway.
	14-May-07	9:20	9:50	Sunny	0	66	69	63	Crane operation in Slip Road A works area; traffic noise from San Tin Highway.
	25-May-07	9:23	9:53	Sunny	0	68	71	63	Traffic noise from San Tin Highway.
	31-May-07	13:45	14:15	Sunny	0	70	74	65	Traffic noise from San Tin Highway.
CM2	2-May-07	10:01	10:31	Sunny	0	70	73	64	Excavation in Slip Road A works area; traffic noise from San Tin Highway.
	8-May-07	10:05	10:35	Sunny	0	71	73	66	Excavation and crane operation in Slip Road A works area; traffic noise from San Tin Highway.
	14-May-07	10:09	10:39	Sunny	0	71	73	65	Crane operation in Slip Road A works area; traffic noise from San Tin Highway.
	25-May-07	10:10	10:40	Sunny	0	71	74	66	Traffic noise from San Tin Highway.
	31-May-07	14:34	15:04	Sunny	0	73	75	68	Traffic noise from San Tin Highway.
CM3	2-May-07	10:54	11:24	Sunny	0	65	59	51	Excavation in M5 works area in the South Division; vehicle pass-by noise from the access road to Ki Lun Tsuen; vehicle idling noise during giving-way in front of the monitoring location.
	8-May-07	10:51	11:21	Sunny	0	66	60	51	Vehicle pass-by noise from the access road to Ki Lun Tsuen; vehicle idling noise during giving-way in front of the monitoring location.
	14-May-07	10:54	11:24	Sunny	0	65	63	51	Excavation in M4 works area in the South Division; vehicle pass-by noise from the access road to Ki Lun Tsuen; vehicle idling noise during giving-way in front of the monitoring location.
	25-May-07	10:56	11:26	Sunny	0	63	63	51	Excavation in M5 works area in the South Division; vehicle pass-by noise from the access road to Ki Lun Tsuen; vehicle idling noise during giving-way in front of the monitoring location.
	31-May-07	15:23	15:53	Sunny	0	63	64	51	Vehicle pass-by noise from the access road to Ki Lun Tsuen; vehicle idling noise during giving-way in front of the monitoring location.

Remarks: (i) CM2 is a non-façade measurement location. A positive correction of 3dB(A) has been applied to the measured noise level according to EPD's guideline.

Improvements to San Tin Interchange Environmental Monitoring and Audit - Noise Monitoring Results

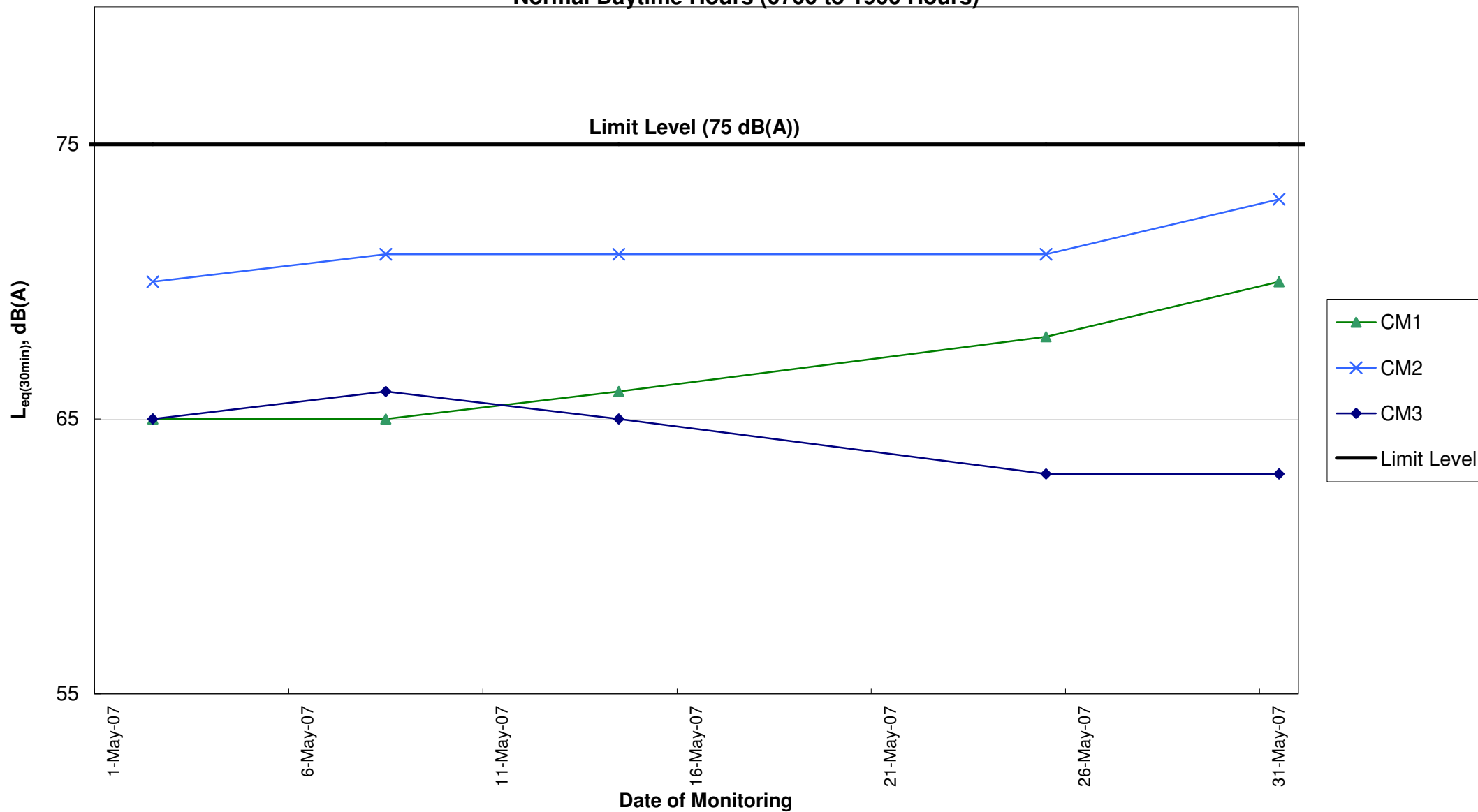
Restricted Hours

General holidays (including Sundays) during the day-time and evening (0700 to 2300 hours)

Monitoring Location	Date of Monitoring	Monitoring Period		Weather	Wind Speed, m/s	L _{eq(15min)} dB(A)	L ₁₀ dB(A)	L ₉₀ dB(A)	Major Noise Source(s)
		From	To						
CM1	6-May-07	9:12	9:27	Sunny	0	64	65	61	Excavation in the N1 Division; traffic noise from San Tin Highway.
	13-May-07	9:40	9:55	Sunny	0	63	65	60	Road paving in N1 Division; traffic noise from San Tin Highway.
	27-May-07	10:05	10:20	Sunny	0	64	66	61	Excavation at South Abutment works area in N1 Division; traffic noise from San Tin Highway.
CM2	6-May-07	9:44	9:59	Sunny	0	<u>69</u>	72	64	Excavation in the N1 Division; traffic noise from San Tin Highway.
	13-May-07	10:20	10:35	Sunny	0	<u>68</u>	71	62	Road paving in N1 Division; traffic noise from San Tin Highway.
	27-May-07	10:28	10:43	Sunny	0	<u>69</u>	72	63	Excavation at South Abutment works area in N1 Division; traffic noise from San Tin Highway.
CM3	6-May-07	10:17	10:32	Sunny	0	64	63	53	Excavation in the N1 Division; vehicle pass-by noise from the access road to Ki Lun Tsuen; vehicle idling noise during giving-way in front of the monitoring location.
	13-May-07	10:55	11:10	Sunny	0	63	64	53	Road paving in N1 Division; vehicle pass-by noise from the access road to Ki Lun Tsuen; vehicle idling noise during giving-way in front of the monitoring location.
	27-May-07	10:55	11:10	Sunny	0	63	63	53	Excavation at South Abutment works area in N1 Division; vehicle pass-by noise from the access road to Ki Lun Tsuen; vehicle idling noise during giving-way in front of the monitoring location.

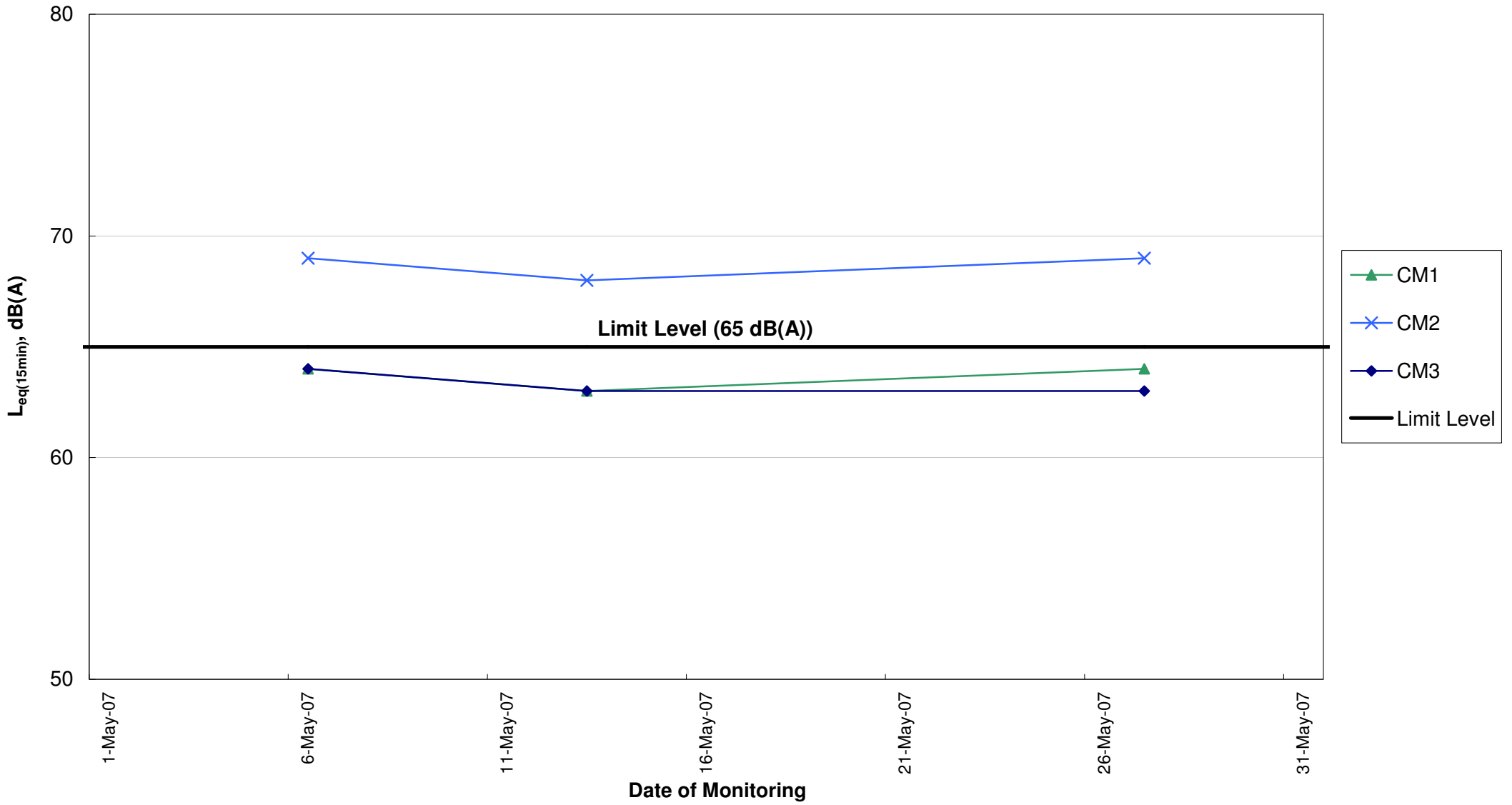
Remarks: (i) CM2 is a non-façade measurement location. A positive correction of 3dB(A) has been applied to the measured noise level according to EPD's guideline.
(ii) Underlined figure indicates an exceedance of the Limit Level of 65dB(A).

Noise Monitoring Results of Monitoring Stations CM1, CM2 & CM3 Normal Daytime Hours (0700 to 1900 Hours)



Note: (1) CM2 is a non-façade measurement location. A positive correction of 3dB(A) has been applied to the measured noise level according to EPD's guideline.

Noise Monitoring Results of Monitoring Stations CM1, CM2 & CM3
Restricted Hours (General holidays (including Sundays) during 0700 to 2300 hours)



Note: (1) CM2 is a non-façade measurement location. A positive correction of 3dB(A) has been applied to the measured noise level according to EPD's guideline.